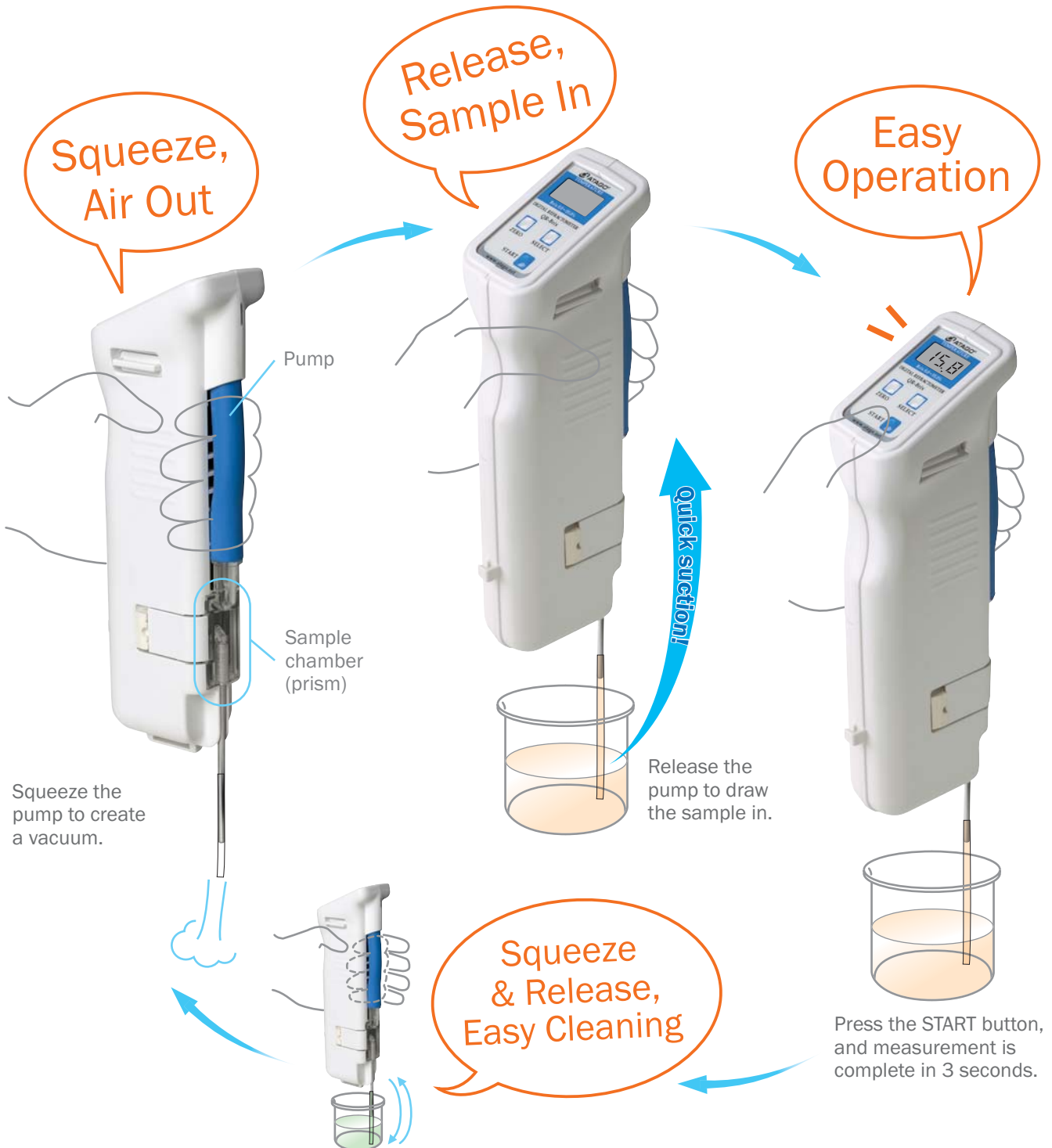


Digital Suction-Type Refractometer

QR-Brix Cat.No.3353

@VWk cf`X'Uh @Vcf[Y]Hr!; 'Ug!F YU Ybn]Yb
A]fcV]c'c[]Y!<n]]YbY_cbfcc''Y
-bXi ghf]YghfUggY%Z*, () <c\ YbYa gZ5 i ghf]U
HY''Z('') +* +* +\$) :: U Z('') +* +* +\$) +
9a UJ'.cZ]W4 `UVk cf`X'Uh



Single-handed operation from measurement to cleaning, without touching any liquid!

No more cumbersome cleaning. Lightweight, compact, and battery-operated for maximum portability. Ideal for hazardous or volatile sample measurements.

Recommended uses

Food and beverage applications

- Soft drinks
- Salt water and condiments
- Brines and soups

Industrial applications

- Chemical solutions
- Metal-working fluids
- Coolants
- Battery fluids

Custom scales are available upon request.

Example :

- Saline concentration (specific gravity or degrees Baume)
- Sodium hydroxide concentration
- Ethylene glycol concentration and freeze point

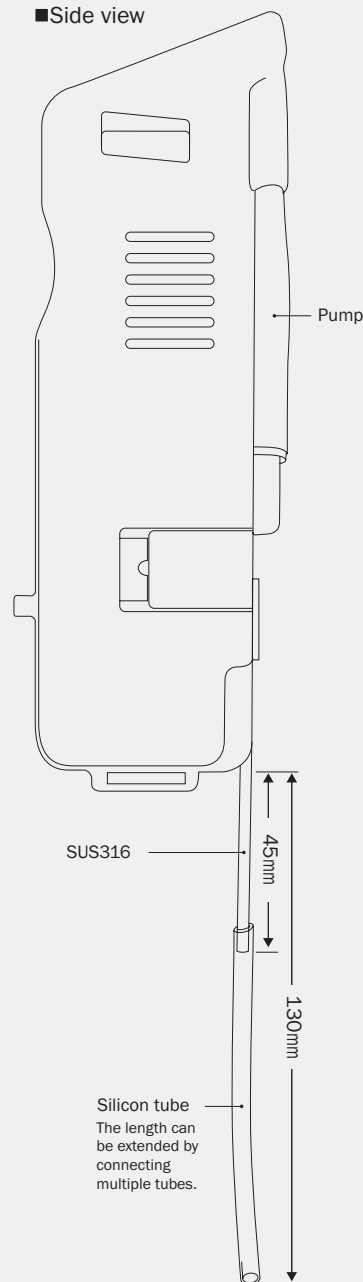
Non-recommended uses

- ① High refractive index samples, such as organic solvents, hydrocarbons, and petroleum.
 - ② Samples that are viscous, oily / fatty, murky, or high in undissolved solid content.
- ※ Capable of measuring liquids with a viscosity of up to 210 centipoise (cP), which equals to a 67% Brix sucrose solution at 20 °C.

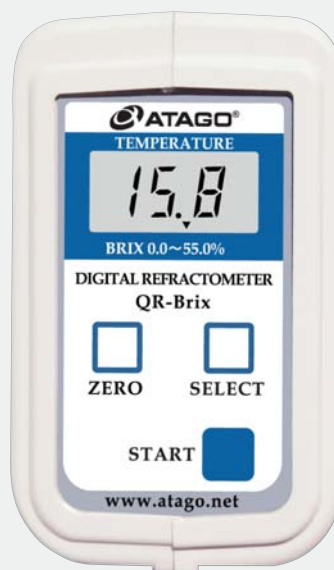
Displayed value

This instrument measures the refractive index of a liquid and displays the converted value in "Brix," which is a percentage measurement of sugar in water. The concentration of a substance other than sugar can be calculated by creating a conversion table of the desired concentration % and corresponding Brix %. Contact ATAGO for further details.

■Side view



■Face panel



<Actual size>

QR-Brix		Cat. No. 3353
Measurement range	Brix 0.0 to 55.0%; temperature 5 to 40°C	
Resolution	Brix 0.1%; temperature 0.1°C	
Accuracy	Brix $\pm 0.2\%$ (with sucrose solution); temperature $\pm 1^\circ\text{C}$	
Sample temperature range	5 to 40°C (Automatic Temperature Compensation)	
Ambient temperature range	5 to 40°C	
Measurement time	Approximately 3 seconds	
Sample volume	At least 2 ml	
Power supply	006P battery(9V)	
Materials	Main body and detection section: ABS resin Sample chamber cover: AS resin	
International Protection class	IP64	
Dimensions and weight	70 × 40 × 210 mm (excluding nozzle), 300 g The maximum possible length of nozzle: 130 mm	
Accessories included	One 95 mm stainless pipe, one 95 mm silicon tube	

All ATAGO refractometers are designed and manufactured in Japan.

ATAGO CO., LTD.

Headquarters: The Front Tower Shiba Koen, 23rd Floor
2-6-3 Shiba-koen, Minato-ku, Tokyo 105-0011, Japan
TEL : 81-3-3431-1943 FAX : 81-3-3431-1945
overseas@atago.net http://www.atago.net/

ATAGO U.S.A., Inc.

TEL : 1-425-637-2107 customerservice@atago-usa.com

ATAGO INDIA Instruments Pvt. Ltd.

TEL : 91-22-2833-8038 / 8076 customerservice@atago-india.com

ATAGO (THAILAND) Co., Ltd.

TEL : 662-982-8718-9 customerservice@atago-thailand.com

ATAGO BRASIL Ltda.

TEL : 55 16 3916-6000 customerservice@atago-brasil.com

ATAGO ITALIA s.r.l.

TEL : 39 2 36557267 customerservice@atago-italia.com

ATAGO CHINA Guangzhou Co., Ltd.

TEL : 86 20-38106065 info@atago-china.com



HACCP GMP GLP

ATAGO products comply with HACCP, GMP, and GLP system standards.

* Specifications and appearance are subject to change without notice.

zeller; a V<

@Vkf`X'Uh @Vef[Y] H'1; 'UgT'FYU[YbnYb
A]_fcV]c'c[JY'!<n] JYbY_cbf'c'Y
bXi ghfJYghfUggY%Z*, () <c\ YbYa gz5 i ghfJU
HY''Z(')) +* '+* +\$) '': U 'Z(')) +* '+* +\$) +
9a Uj'.cZVW4 `Uvk cf`X'Uh