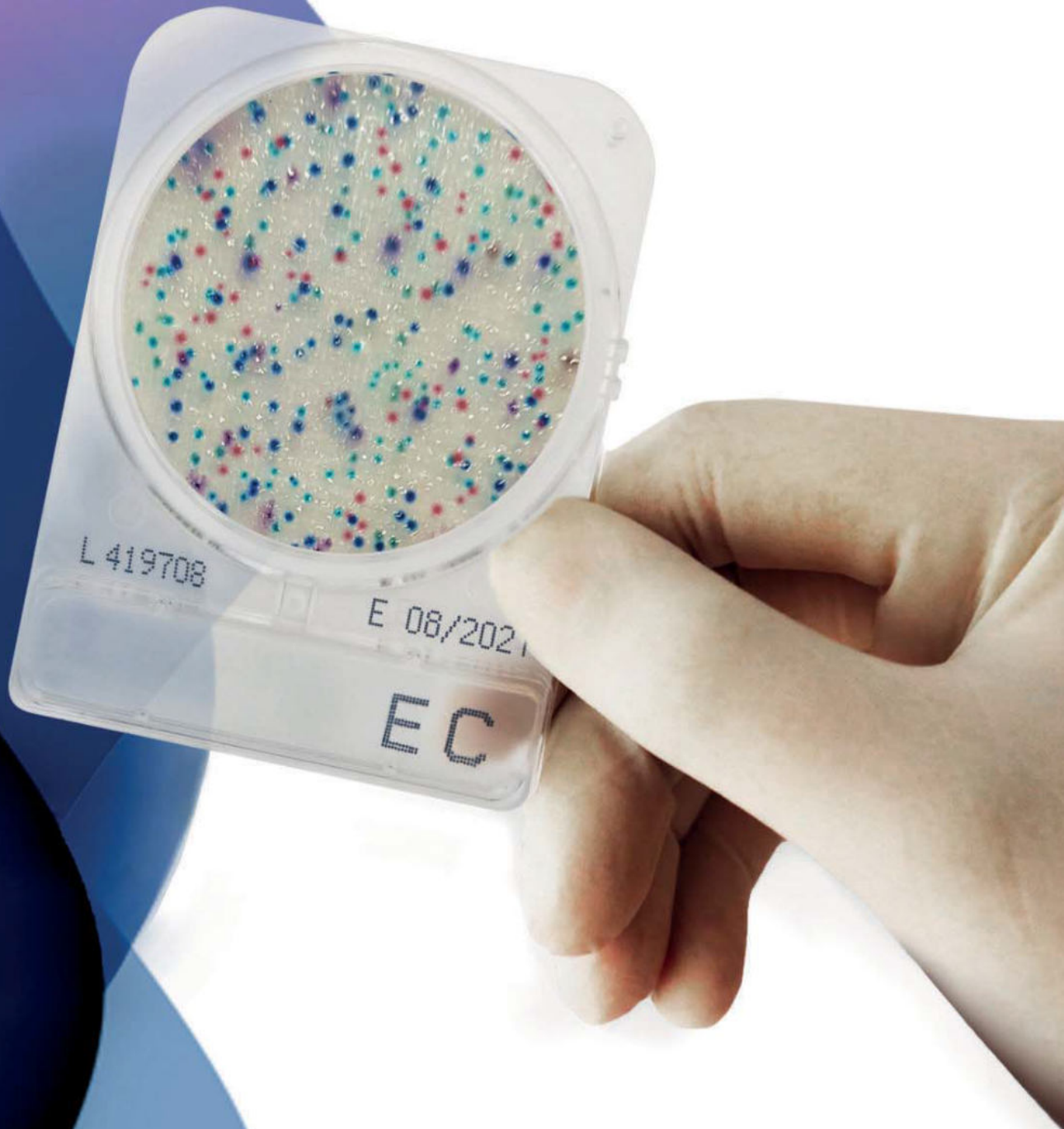


zeller

Labworld.at

Compact Dry™

BROCHURE



Zeller

Labworld.at



Mikrobiologie & Hygienekontrolle



TROCKEN- & FERTIGNÄHRMEDIEN

MIKROBIOLOGISCHE
PROBENVORBEREITUNG



FILTRATIONSGERÄTE
& MEMBRANEN



ATP - MESSUNG &
HYGIENEKONTROLLE



Zeller GmbH.
Industriestrasse 1
6845 Hohenems

 05576 76705
 office@labworld.at
 www.labworld.at

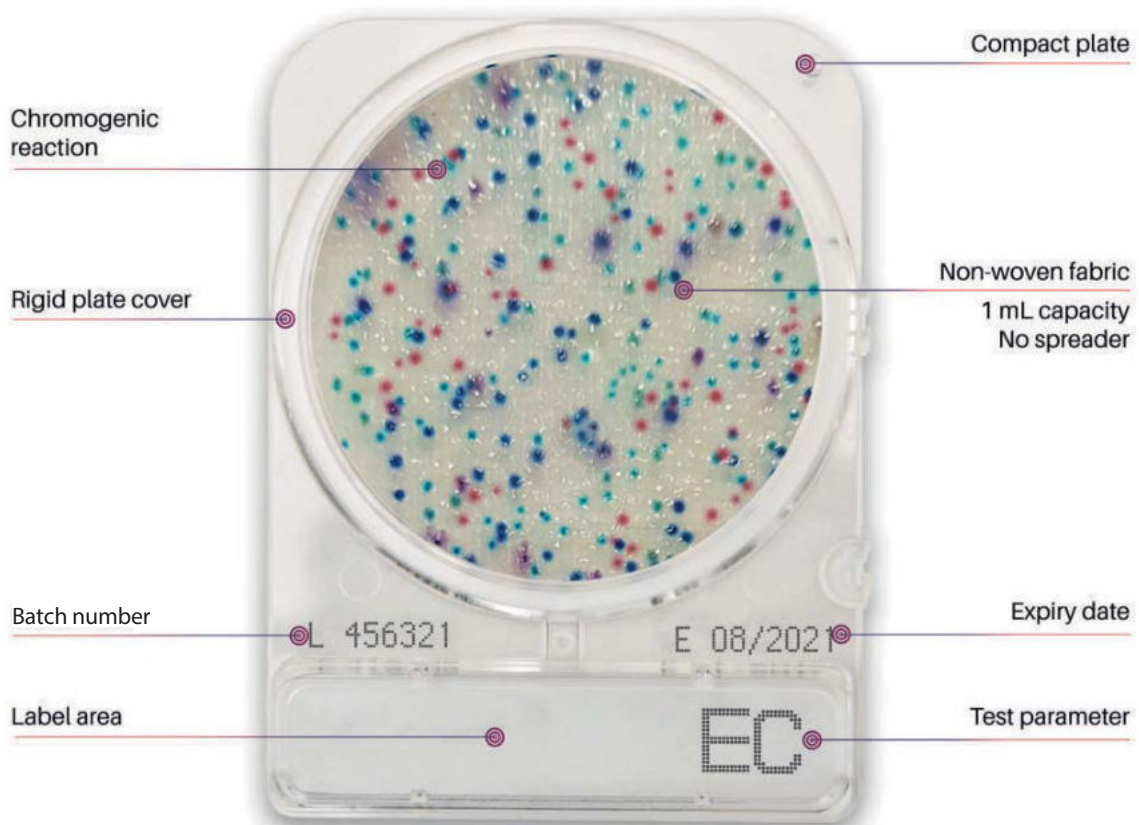
CompactDry : an easy test method to detect and identify microbial contamination

CompactDry - a ready-to-use method to minimise microbial testing time and improve quality control processes. Dehydrated, selective and chromogenic media for total count and/or **microbial species identification**.

Can be used to test raw materials and processed food products - food, drinks, ready meals, cosmetic and environmental. CompactDry is also used to test surfaces (both food and environmental) using sample swabbing.

CompactDry has a sealed lid to minimise cross-contamination/spillage and a rigid structure to ease handling and stacking.

Features



CompactDry Protocol



- 1** Open the cap.
- 2** Dispense 1 mL of sample in the centre of the CompactDry plate .
- 3** Sample diffuses automatically and evenly across the sheet transforming the dry sheet into a gel within seconds.
- 4** Replace the cap, label and turn the plate over.
- 5** Incubate for the appropriate time and at required temperature.
- 6** Following incubation, count the number of coloured colonies.

Product	Target	Incubation temperature	Incubation time	Approval
CompactDry AQ	Heterotrophic bacteria in water	36 ± 2 °C (Filter/SMEWW method) 22 ± 2 °C (ISO6222:1999)	44 ± 4 hours 68 ± 4 hours	/
CompactDry BC	Bacillus cereus	30 ± 1 °C	24 ± 2 hours	NordVal/MicroVal
CompactDry CF	Coliform	MicroVal/NordVal: 37 ± 1 °C AOAC: 35 ± 2 °C	24 ± 2 hours	AOAC/NordVal/ MicroVal
CompactDry EC	E. coli and coliform	MicroVal/NordVal: 37 ± 1 °C AOAC: 35 ± 2 °C	24 ± 2 hours	AOAC/NordVal/ MicroVal
CompactDry ETB	Enterobacteriaceae	37 ± 1 °C	24 ± 2 hours	AOAC/NordVal/ MicroVal
CompactDry ETC	Enterococci	NordVal/MicroVal: 36 ± 1 °C AOAC: 37 ± 1 °C	24 ± 2 hours	AOAC/NordVal/ MicroVal
CompactDry LM	Listeria monocytogenes	Detection: 37 ± 1 °C Enumeration: 37 ± 1 °C	Detection: 24 to 48h Enumeration: 24 to 48h	MicroVal
CompactDry LS	Listeria species	35 - 37 ± 2 °C	24 - 48 hours	/
CompactDry PA	Pseudomonas aeruginosa	34 - 36 °C	48 ± 3 hours	MicroVal
CompactDry SL	Salmonella	Enrichment: 35 - 37 °C Detection: 41 - 43 °C	Enrichment: 20-24 hours Detection: 20-24 hours	/
CompactDry TC	Total count	35 ± 1 °C (AOAC) 30 ± 1 °C (MicroVal, NordVal)	48 ± 3 hours	AOAC/NordVal/ MicroVal
CompactDry VP	Vibrio parahaemolyticus	35 - 37 °C	20 - 24 hours	/
CompactDry X-SA	Staphylococcus aureus	35 ± 2 °C (AOAC) 37 ± 1 °C (MicroVal/NordVal)	24 ± 2 hours	AOAC/NordVal/ MicroVal
CompactDry YM/YMR	Yeast and mould	25 ± 1 °C	YMR: 48 - 72 hours YM: 3 - 7 days	AOAC/NordVal/ MicroVal

Products

CompactDry AQ for water heterotrophic bacteria



CompactDry AQ plates contains a chromogenic nutrient poor medium for determining the colony count of heterotrophic organisms in treated drinking water and ultra-pure water. Colonies are almost all red. Yeast tends to grow as white-pink colonies. Moulds grow as a typical 3-dimensional cotton wool form.

Incubation Temperature
44 ± 4 hours @ 36 ± 2°C 68 ± 4 hours @ 22 ± 2°C ISO 6222: 1999 Water quality-Enumeration of culturable micro-organisms
Interpretation
Red

PACKAGES	PRODUCT NUMBER
40 plates	54061-0AQ-0040
240 plates	54061-0AQ-0240
1400 plates	54061-0AQ-1400

CompactDry BC for the detection of Bacillus cereus



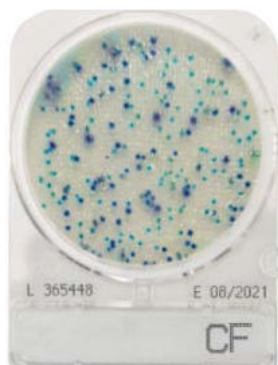
CompactDry BC plate combines the properties of chromogenic dry media and gel contact plates. It is used for the quantitative detection of Bacillus cereus in food samples. Bacillus cereus forms light blue to blue colonies.

Incubation Temperature
30 ± 1 °C
Incubation Time
24 ± 2 hours
Interpretation
Green / Blue colonies

PACKAGES	PRODUCT NUMBER
40 plates	54068-0BC-0040
240 plates	54068-0BC-0240
1400 plates	54068-0BC-1400

**MicroVal
NordVal**

CompactDry CF for coliform



CompactDry CF is an easy tool for the detection of coliform bacteria. The media contains the chromogenic enzyme substrate X-Gal and coliforms colonies are coloured blue/blue green. The growth of other bacterial types (genus) is mostly inhibited but in certain instances may form colourless colonies.

Incubation Temperature
MicroVal/ NordVal: 37 +/- 1 °C AOAC: 35 +/- 2 °C
Incubation Time
24 ± 2 hours
Interpretation
Blue / Blue green colonies

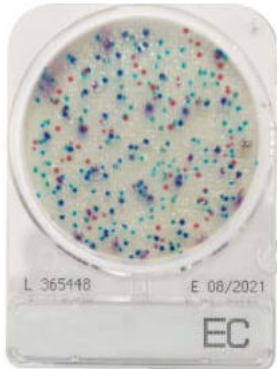
PACKAGES	PRODUCT NUMBER
40 plates	54053-0CF-0040
240 plates	54053-0CF-0240
1400 plates	54053-0CF-1400



**MicroVal
NordVal**

Products

CompactDryEC(E.coli and coliforms)



CompactDry EC is a medium to detect E. coli and coliform bacteria. The medium contains two different chromogenic enzyme substrates: Magenta-Gal and X-Gluc. E.coli forms blue colonies. Red and blue colonies counted together provides the total coliform number.

PACKAGES	PRODUCT NUMBER
40 plates	54052-0EC-0040
240 plates	54052-0EC-0240
1400 plates	54052-0EC-1400

Incubation Temperature
MicroVal/NordVal: 37 ± 1 °C AOAC: 35 ± 2 °C
Incubation Time
24 ± 2 hours
Interpretation
<i>E. coli</i> : Blue / Blue purple colonies Coliform : Total number of both red and blue colonies
● / ●



**MicroVal
NordVal**

CompactDry ETB for Enterobacteriaceae



CompactDry ETB is very easy to use system to detect Enterobacteriaceae. It's substrates allows the differentiation of the Enterobacteriaceae from other groups. Enterobacteriaceae are red/purple coloured. Red/purple coloured colonies plus other coloured colonies together form the total gram negative bacteria count.

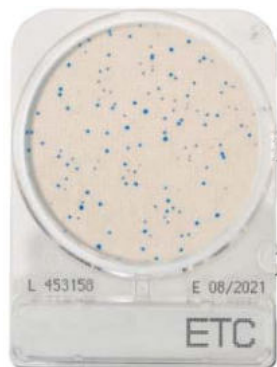
PACKAGES	PRODUCT NUMBER
40 plates	54055-ETB-0040
240 plates	54055-ETB-0240
1400 plates	54055-ETB-1400

Incubation Temperature
37 +/- 1 °C
Incubation Time
24 ± 2 hours
Interpretation
Red / Red-Purple
● / ●



**MicroVal
NordVal**

CompactDry ETC for easy detection of Enterococci in food and water



The CompactDry ETC is based on the usage of X-glucoside (X-Gluc) and selective antibiotics. Enterococci β-glucosidase targets X-Gluc and allows the specific detection of enterococci through the formation of blue to blue/green colonies.

PACKAGES	PRODUCT NUMBER
40 plates	54056-ETC-0040
240 plates	54056-ETC-0240
1400 plates	54056-ETC-1400



**MicroVal
NordVal**

Incubation Temperature
NordVal/MicroVal: 36 +/- 1°C AOAC: 37 +/- 1°C
Incubation Time
24 ± 2 hours
Interpretation
Light blue / Blue colonies
● / ●

Products

CompactDry LM for *Listeria monocytogenes*



CompactDry LM is a ready-to-use, chromogenic plate for enumeration and detection of *Listeria monocytogenes* in food and drinks. Evaluation of surfaces and in working environments using the CompactDry Swab. Detection of *Listeria monocytogenes* through the combination of selective agents and chromogenic substrates. *Listeria monocytogenes* form red colonies with a blue halo.

Incubation Temperature
Detection: 37 ± 1 °C Enumeration: 37 ± 1 °C
Incubation Time
Detection: 25 ± 1 hour Enumeration: 24 to 48 ± 2 h
Interpretation
Red colonies with blue halo

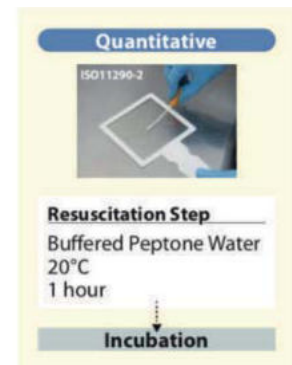
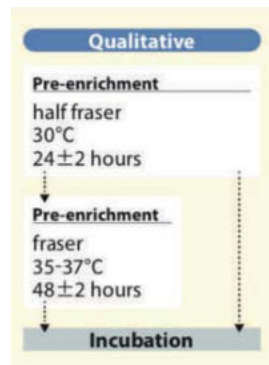
MicroVal

PACKAGES	PRODUCT NUMBER
40 plates	54067-OLM-0040
240 plates	54067-OLM-0240
1400 plates	54067-OLM-1400

CompactDry LS for *Listeria* species



Incubation Temperature
35 / 37 ± 2 °C
Incubation Time
24 ± 2 hours plus a further 24 ± 2 hours
Interpretation
Light blue / Blue colonies

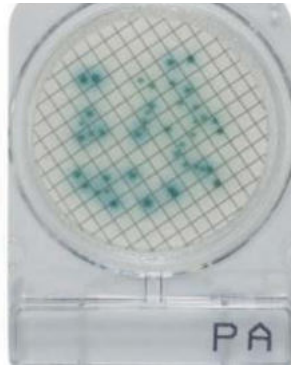


CompactDry LS is used for the quantitative detection of *Listeria* in food and drinks. Evaluation of surfaces and in working environments using the CompactDry Swab. Detection of *Listeria* through the combination of selective agents and chromogenic substrates. *Listeria* species form light blue/blue colonies.

PACKAGES	PRODUCT NUMBER
40 plates	54060-OLS-0040
240 plates	54060-OLS-0240
1400 plates	54060-OLS-1400

Products

CompactDryPA for *Pseudomonas aeruginosa*



Incubation Temperature
34 – 36 °C

Incubation Time
48 +/- 3 hours

Interpretation
Red colonies surrounded by a greenish-yellow halo

● + ●



Interpretation Membrane Filter Method
Light green / Green blue colonies

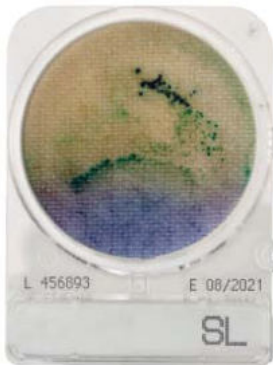
● / ●

MicroVal

PACKAGES	PRODUCT NUMBER
40 plates	54062-OPA-0040
240 plates	54062-OPA-0240
1400 plates	54062-OPA-1400

CompactDry PA for Quantitative detection of *Pseudomonas aeruginosa*. *P. aeruginosa* forms red colonies which are generally surrounded by a greenish-yellow halo.

CompactDry SL for *Salmonella*



CompactDry SL detects salmonella using 20 – 24 hour pre-enrichment steps. The plates are based on the combination of different test principles:

1. Alkalinisation of the medium, by *Salmonella* lysine decarboxylase the medium colour will change from blue-purple to yellow. The yellow coloration spreads over the plate due to *Salmonella* motility.
2. Greening of the colony, caused by decomposition of chromogenic substrate with a specific *Salmonella* enzyme. Black colonies are generated by hydrogen sulphide producing *Salmonella*.

pre-enrichment w/ BPW
35-37°C @20-24 hours

Incubation Time
41-43°C @20-24 hours

Interpretation
Yellow : motility of *Salmonella*
Black : hydrogen sulfide producing *Salmonella*
Green : chromogenic substrate with specific enzyme on *Salmonella*

● / ● / ●

PACKAGES	PRODUCT NUMBER
40 plates	54058-0SL-0040
240 plates	54058-0SL-0240
1400 plates	54058-0SL-1400



Products

CompactDry TC (Total Count)



CompactDry TC is a medium for total viable bacterial count, which contains nutrient standard agar. Bacterial colonies are coloured red on CompactDry TC due to the redox indicator tetrazolium salt.

PACKAGES	PRODUCT NUMBER
40 plates	54051-0TC-0040
240 plates	54051-0TC-0240
1400 plates	54051-0TC-1400

Incubation Temperature
35 ± 1 °C (AOAC) 30 ± 1 °C (MicroVal, NordVal)
Incubation Time
48 ± 3 hours
Interpretation
All colonies
 / 





**MicroVal
NordVal**

CompactDry VP for *Vibrio parahaemolyticus*



CompactDry VP can easily detect *Vibrio parahaemolyticus*, but also differentiates *Vibrio parahaemolyticus* from other vibrio species. The product contains a specific chromogenic substrate for *Vibrio parahaemolyticus* which develops blue/green or blue colonies, other vibrio species form white colonies.

PACKAGES	PRODUCT NUMBER
40 plates	06749-0VP-0040
240 plates	06749-0VP-0240



Incubation Temperature
35 - 37 °C
Incubation Time
20 - 24 hours
Interpretation
Blue / Blue green colonies
 / 

CompactDry X-SA for *Staphylococcus aureus*



CompactDry X-SA is a medium used to determine *Staphylococcus aureus* by means of selective growth and differentiation.

PACKAGES	PRODUCT NUMBER
40 plates	54057-XSA-0040
240 plates	54057-XSA-0240
1400 plates	54057-XSA-1400

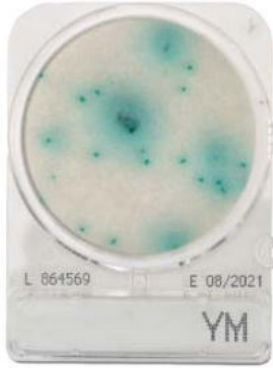
Incubation Temperature
35 ± 2 °C (AOAC) 37 ± 1 °C (MicroVal/NordVal)
Incubation Time
24 ± 2 hours
Interpretation
Light blue / Blue colonies
 / 



**MicroVal
NordVal**

Products

CompactDry YM/YMR for yeast and mould



Incubation Temperature

25 +/- 1 °C

Incubation Time

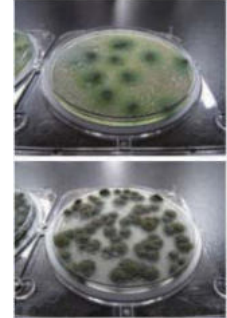
YM: 3-7 days
YMR: 48-72 hours

Interpretation

Yeast : Blue or white to cream colonies
Mold : Cottony colonies with mold colors



3D Growth of Molds



Photos Courtesy of NPO Center for Fungal Consultation Japan

PACKAGES	PRODUCT NUMBER
40 plates	54054-0YM-0040
240 plates	54054-0YM-0240
1400 plates	54054-0YM-1400

PACKAGES	PRODUCT NUMBER
40 plates	54063-YMR-0040
240 plates	54063-YMR-0240
1400 plates	54063-YMR-1400



**MicroVal
NordVal**

CompactDry YM/YMR differentiates yeasts and mould through characteristic colour development and morphology. The medium contains the chromogenic enzyme substrate X-Phos which results in blue yeast colonies. Moulds form "cotton wool" colonies with a characteristic colour. Antibiotics inhibit the growth of bacteria. The CompactDry YM/YMR facilitates very good 3-dimension growth of yeast and mould.

PRODUCT NAME	TARGETS	PACKAGES	PRODUCT NUMBER
AQ	Heterotrophic bacteria in water	40 plates	54061-0AQ-0040
		240 plates	54061-0AQ-0240
		1400 plates	54061-0AQ-1400
BC	Bacillus cereus	40 plates	54068-0BC-0040
		240 plates	54068-0BC-0240
		1400 plates	54068-0BC-1400
CF	Coliform	40 plates	54053-0CF-0040
		240 plates	54053-0CF-0240
		1400 plates	54053-0CF-1400
EC	E. coli and coliform	40 plates	54052-0EC-0040
		240 plates	54052-0EC-0240
		1400 plates	54052-0EC-1400
ETB	Enterobacteriaceae	40 plates	54055-ETB-0040
		240 plates	54055-ETB-0240
		1400 plates	54055-ETB-1400
ETC	Enterococci	40 plates	54056-ETC-0040
		240 plates	54056-ETC-0240
		1400 plates	54056-ETC-1400
LM	Listeria monocytogenes	40 plates	54067-OLM-0040
		240 plates	54067-OLM-0240
		1400 plates	54067-OLM-1400
LS	Listeria species	40 plates	54060-OLS-0040
		240 plates	54060-OLS-0240
		1400 plates	54060-OLS-1400
PA	Pseudomonas aeruginosa	40 plates	54062-0PA-0040
		240 plates	54062-0PA-0240
		1400 plates	54062-0PA-1400
SL	Salmonella	40 plates	54058-OSL-0040
		240 plates	54058-OSL-0240
		1400 plates	54058-OSL-1400
TC	Total count	40 plates	54051-0TC-0040
		240 plates	54051-0TC-0240
		1400 plates	54051-0TC-1400
VP	Vibrio parahaemolyticus	40 plates	06749-0VP-0040
		240 plates	06749-0VP-0240
X-SA	Staphylococcus aureus	40 plates	54057-XSA-0040
		240 plates	54057-XSA-0240
		1400 plates	54057-XSA-1400
YM	Yeast and mould	40 plates	54054-0YM-0040
		240 plates	54054-0YM-0240
		1400 plates	54054-0YM-1400
YMR (rapid)	Yeast and mould	40 plates	54063-YMR-0040
		240 plates	54063-YMR-0240
		1400 plates	54063-YMR-1400

zeller GmbH

Labworld.at Laborgeräte - Glas - Reagenzien
Mikrobiologie - Hygienekontrolle
Industriestr. 1, 6845 Hohenems, Austria
Tel. +43 (0)5576 76705 Fax +43 (0)5576 76705 7
Email: office@labworld.at